



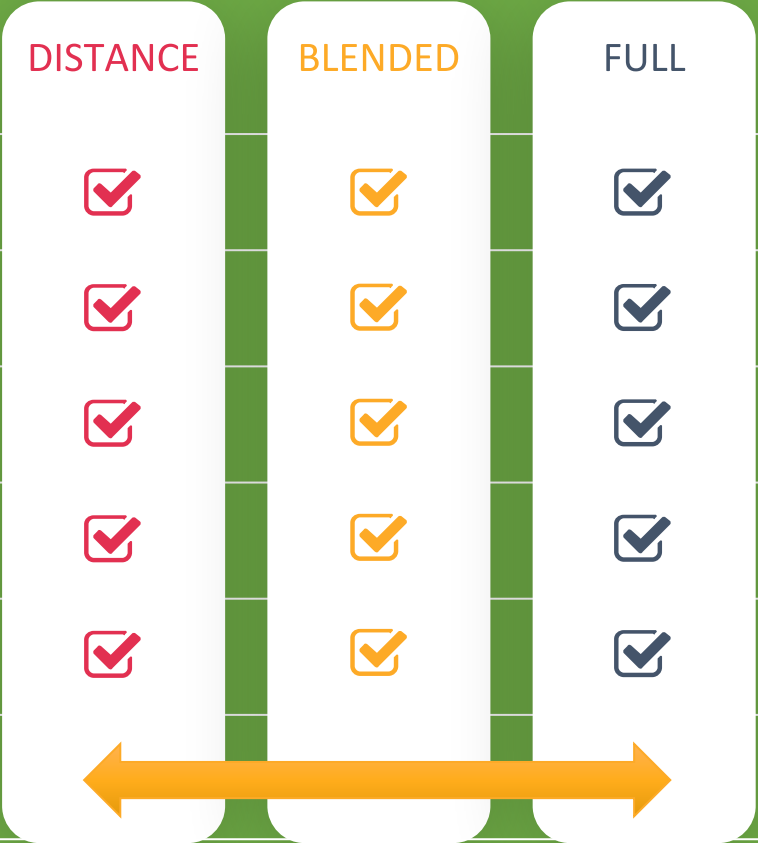
Balancing Health & Education

Building a Flexible Schedule for SMUHSD

Subcommittee Considerations

Guiding Principles

- Safeguards health & safety of staff & students
- Complies with CA & SM health dept directives
- Created with feedback from multiple sources
- Equitable access to teaching & learning
- Addresses achievement/opportunity gaps
- Flexibly move between stages



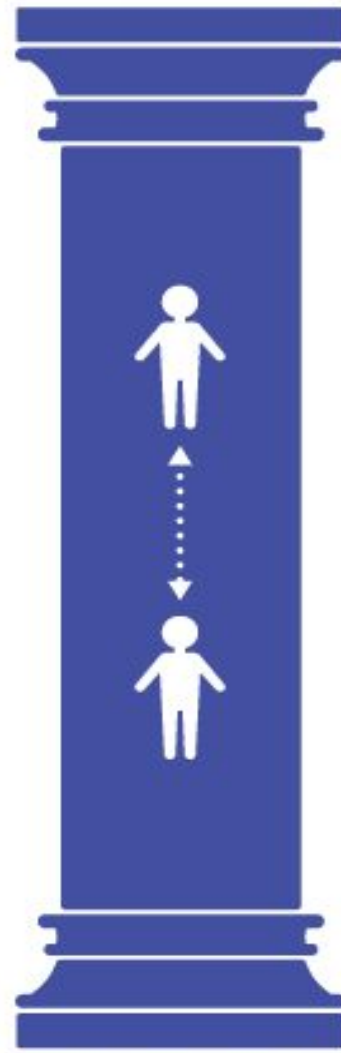
Safe Return to School



Health & Hygiene



Face Coverings

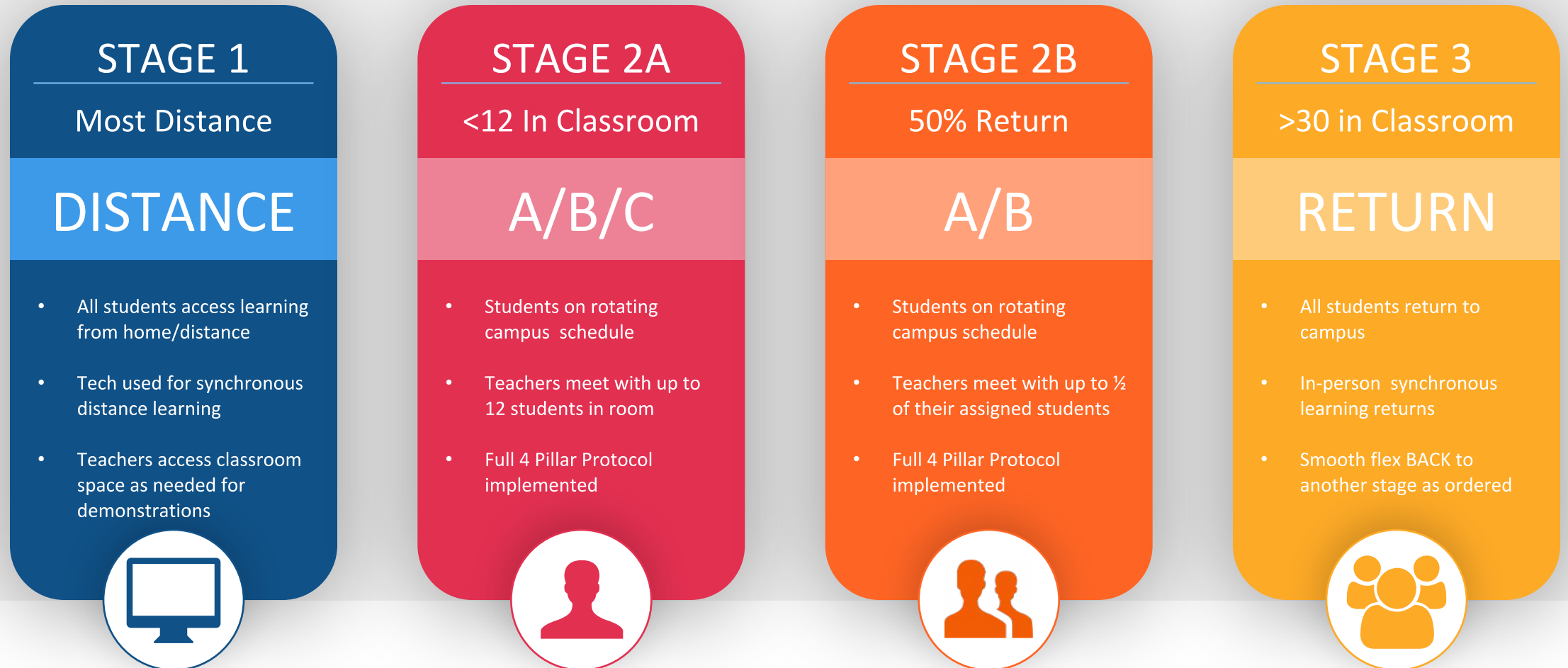


Physical Distancing



Limit Gatherings

STAGES OF IMPLEMENTATION: WHERE STUDENTS & TEACHERS CONNECT



FLEXIBLE STAGING DEPENDENT UPON ORDERS FROM STATE & COUNTY HEALTH OFFICER

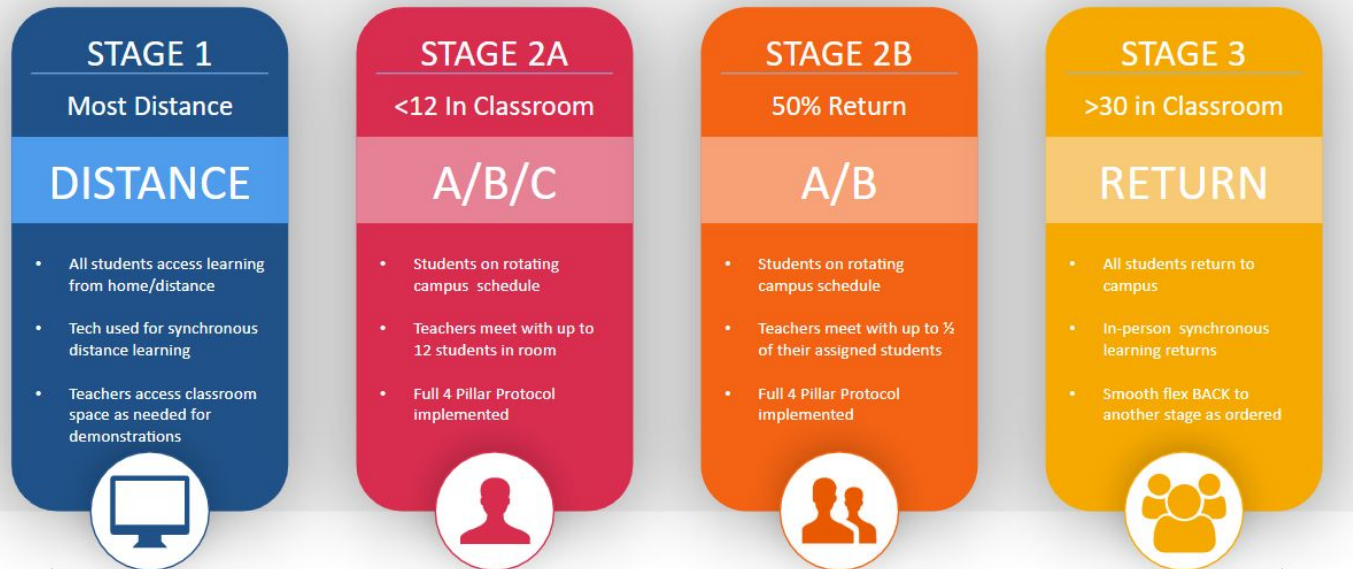
Timeline

Schedule Committee Meetings

- May 29th 9am, June 1st 10am, and June 6th 9am
- Two schedules recommended to school board, finalized June 6th
 1. 100% Distance Learning
 2. Blended Learning / In-person Schedule
- School Board Meeting, June 11th 5:30pm
- Revisions
- Decision on 1 or 2 by July 15th

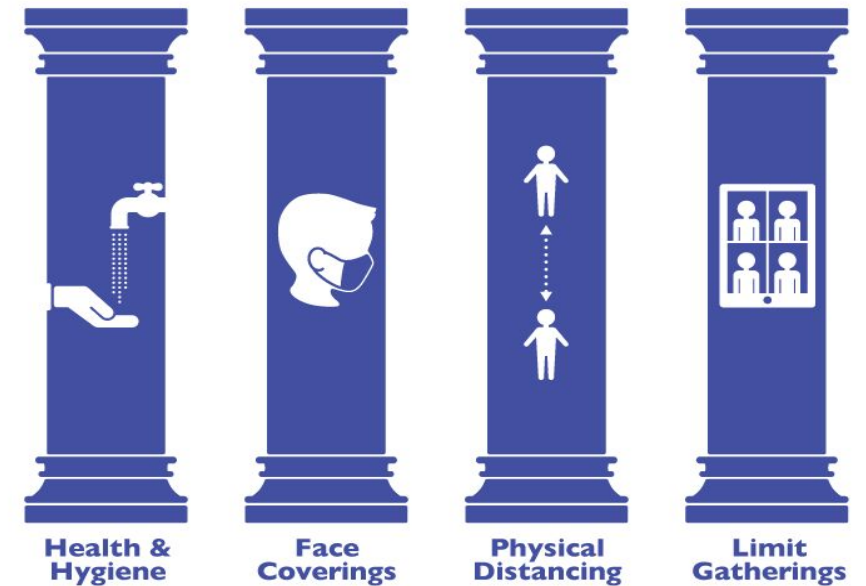
Distance Learning

STAGES OF IMPLEMENTATION: WHERE STUDENTS & TEACHERS CONNECT



FLEXIBLE STAGING DEPENDENT UPON ORDERS FROM STATE & COUNTY HEALTH OFFICER

Safe Return to School



Distance Learning 100% Schedule - Quarter

Period 1/4	8:30-9:50	<ul style="list-style-type: none">• Synchronous Instruction Time
Period 2/5	10:00-11:20	<ul style="list-style-type: none">• Synchronous Instruction Time
Period 3/6	11:30-12:50	<ul style="list-style-type: none">• Synchronous Instruction Time
Lunch	12:50-1:20	<ul style="list-style-type: none">• Breaktime
Extension Period	1:30-2:50	<ul style="list-style-type: none">• Synchronous Instruction Time• Underrepresented students attend advisory period on-campus• Dual enrollment - scheduled after lunch

STAGE 1

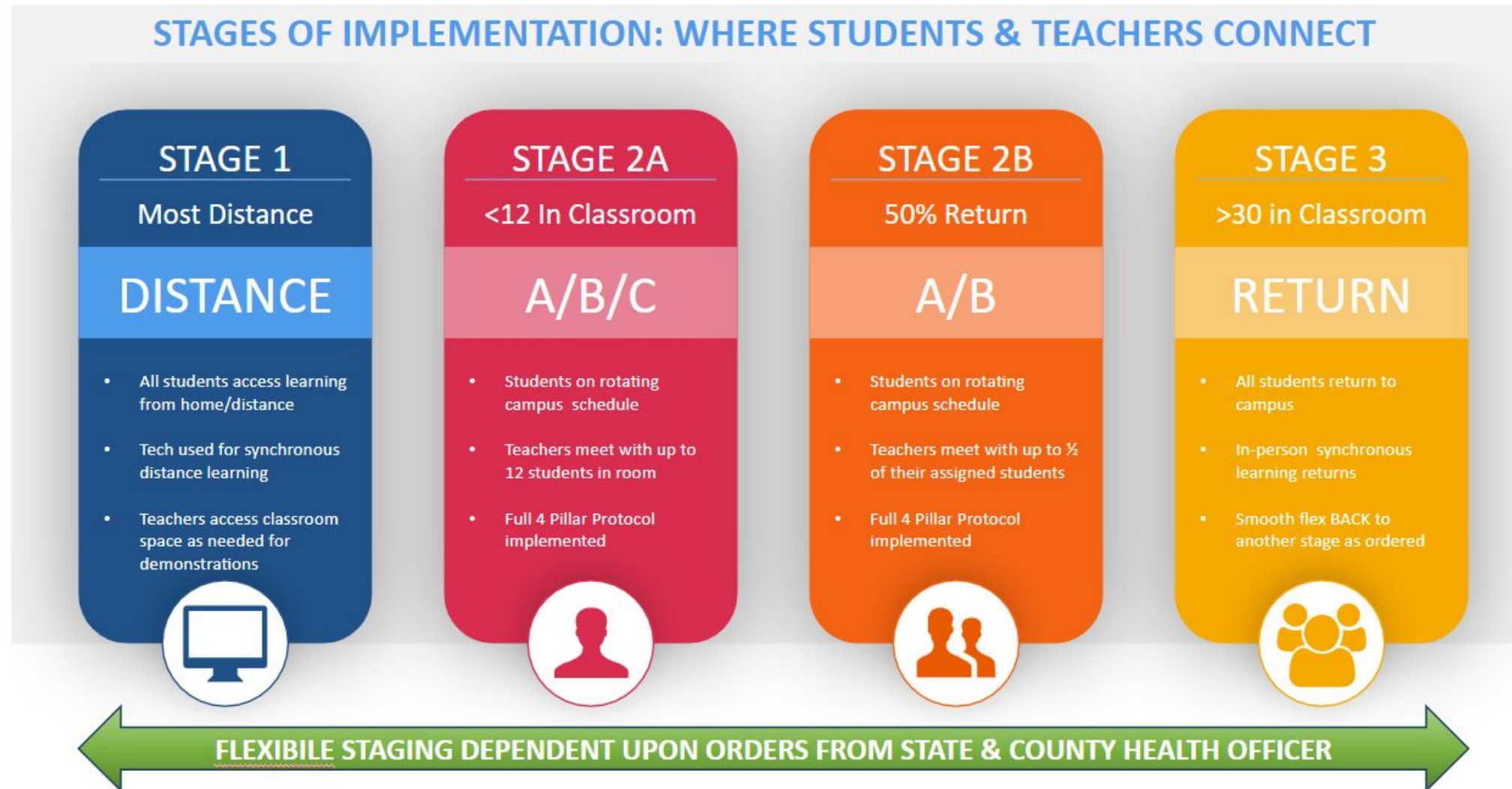
Most Distance

DISTANCE

- All students access learning from home/distance
- Tech used for synchronous distance learning
- Teachers access classroom space as needed for demonstrations



Quarter Schedule



Schedule - Quarter

Period 1/4	8:30-9:50	<ul style="list-style-type: none">• Any 2 of 6 requested classes - PE time TBD
Period 2/5	10:00-11:20	<ul style="list-style-type: none">• Any 2 of 6 requested classes - PE time TBD
Period 3/6	11:30-12:50	<ul style="list-style-type: none">• Any 2 of 6 requested classes - PE time TBD
Lunch	12:50-1:20	<ul style="list-style-type: none">• Lunch offered in various assigned locations on-campus, students should eat off-campus• Outside sitting and gym space available for advisory students only
Extension Period	1:30-2:50	<ul style="list-style-type: none">• Underrepresented students attend advisory period on-campus• Offer 7th classes as semester distance learning - off-campus• Dual enrollment - scheduled after lunch

Stage 2A: Quarter Classes

Example 3-week rotation

ABC Rotation - 1/3 of Classroom

PE on non-rotation days


ELD and SWD more regular or daily

Enrollment in Class Each Day

STAGE 2A
<12 In Classroom

A/B/C

- Students on rotating campus schedule
- Teachers meet with up to 12 students in room
- Full 4 Pillar Protocol implemented



Week	Monday	Tuesday	Wednesday	Thursday	Friday
1	Group A	Group B	Group C	Group A	Group B
2	Group C	Group A	Group B	Group C	Group A
3	Group B	Group C	Group A	Group B	Group C

*Groups will be determined last name by alpha or some other clear way

Stage 2B

Quarter Classes

Example 2-week rotation

AB Rotation - 1/2 of Classroom

Enrollment in Class Each Day

PE on non-rotation days

ELD and SWD more regular or daily

STAGE 2B

50% Return

A/B

- Students on rotating campus schedule
- Teachers meet with up to ½ of their assigned students
- Full 4 Pillar Protocol implemented



Week	Monday	Tuesday	Wednesday	Thursday	Friday
1	Group A	Group B	Group A	Group B	Group A
2	Group B	Group A	Group B	Group A	Group B

*Groups will be determined last name by alpha or some other clear way

[Roseville High School's Schedule \(Pre-Covid\)](#)

Extension Period Options 1:30-3

- Distance Learning (Quarter or Semester) Synchronously
 - Identifying classes to offer
 - Consider cross campus offerings
- Support Classes, ELD, SWD, & Online Credit Recovery
- Dual Enrollment in SMCCCD
- District led Edgenuity courses
- Other courses - WASC accredited online institutions like BYU (not district funded)